



CHERIE
BERGER
TEAM

August 2022

Watchung Market Insights

www.cherieberger.com

Watchung

AUGUST 2022

Market Profile & Trends Overview

The table belows shows data & statistics for August 2022 (CM), and the percentage difference of these metrics compared to data from last month (LM), the last three months (L3M), the same month last year (PYM), the entire last year (LY), prior year (PY), year-to-date (YTD), and the prior year-to-date (PYTD).

		CM	LM	L3M	PYM	LY	PY	YTD	PYTD
Inventory	# OF PROPERTIES	28	0%	27%	-18%	4%	-22%	-	-
	MEDIAN PRICE	\$1,089,750	0%	4%	31%	18%	38%	-	-
	AVERAGE PRICE	\$1,321,148	5%	12%	31%	24%	38%	-	-
	PRICE PER SQFT	\$324	4%	0%	21%	14%	36%	-	-
	MONTHS OF SUPPLY	4.0	71%	98%	6%	-60%	-39%	-	-
New Listings	# OF PROPERTIES	11	-21%	-28%	-31%	-1%	-10%	92	-13.2%
	MEDIAN PRICE	\$875,000	-8%	-12%	5%	6%	11%	\$899,500	22.0%
	AVERAGE PRICE	\$987,514	-13%	-12%	6%	10%	6%	\$1,027,376	16.6%
	PRICE PER SQFT	\$335	15%	8%	32%	32%	54%	\$303	27.3%
Sales	# OF PROPERTIES	7	-42%	-36%	-22%	-24%	6%	72	53.2%
	MEDIAN PRICE	\$999,000	1%	13%	23%	22%	56%	\$897,250	41.9%
	AVERAGE PRICE	\$882,714	-18%	-11%	10%	0%	22%	\$955,658	29.1%
	PRICE PER SQFT	\$248	-26%	-21%	-1%	-4%	7%	\$295	24.5%
	SALE-TO-LIST RATIO	98.1%	-6.6%	-7%	-1.6%	0.1%	0.8%	102.6%	6.5%

© 2022. Based on information from Garden State MLS, LLC for the period of January 2018 through August 2022. Due to MLS reporting methods and allowable reporting policy, this data is only informational and may not be completely accurate. Data maintained by the MLS may not reflect all real estate activity in the market.

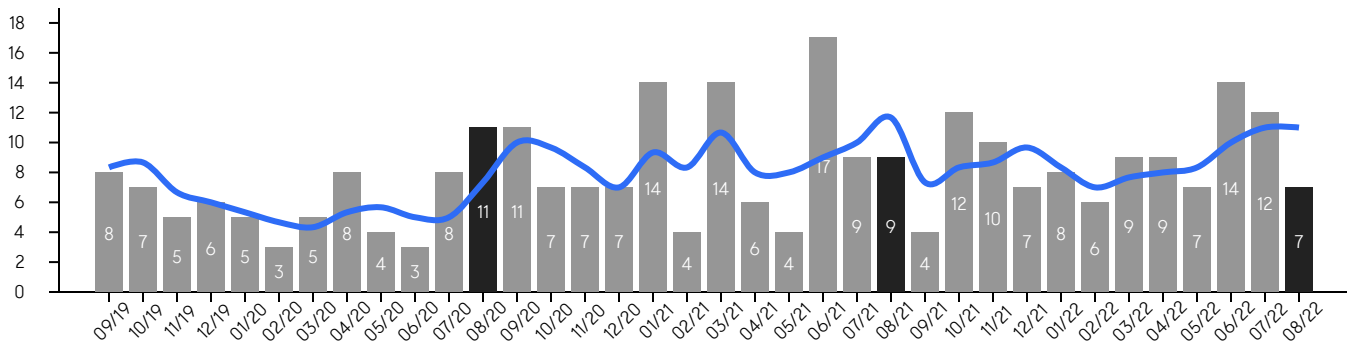
Watchung

AUGUST 2022

Property Sales

There were 7 sales in August 2022, a change of -22% from 9 in August 2021 and -42% from the 12 sales last month. Compared to August 2020 and 2021, sales were at their lowest level. There have been 72 year-to-date (YTD) sales, which is 53.2% higher than last year's year-to-date sales of 47.

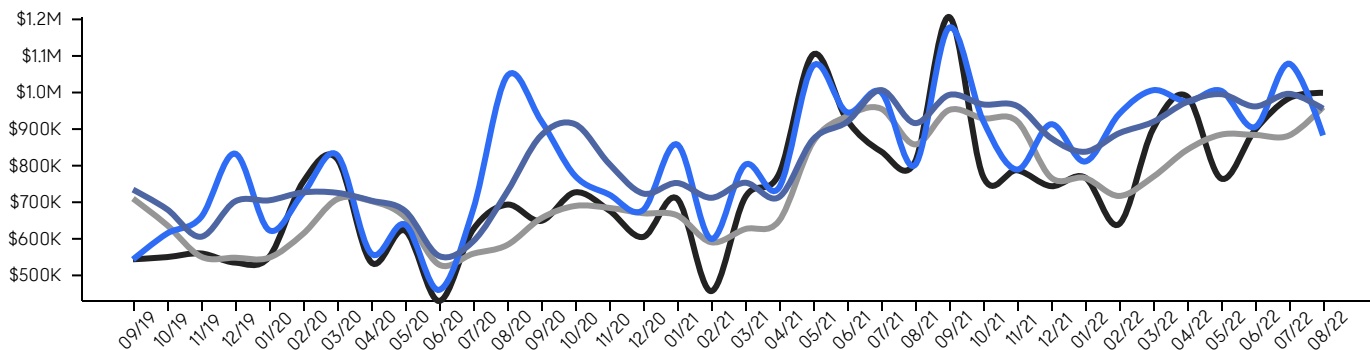
■ 3-Month Average



Property Prices

The median sales price in August 2022 was \$999,000, a change of 23% from \$810,509 in August 2021, and a change of 1% from \$984,500 last month. The average sales price in August 2022 was \$882,714, a change of 10% from in August 2021, and a change of -18% from last month, and was mid level compared to 2021 and 2020.

■ Median ■ Median (3-Month) ■ Average ■ Average (3-Month)



© 2022. Based on information from Garden State MLS, LLC for the period of January 2018 through August 2022. Due to MLS reporting methods and allowable reporting policy, this data is only informational and may not be completely accurate. Data maintained by the MLS may not reflect all real estate activity in the market.

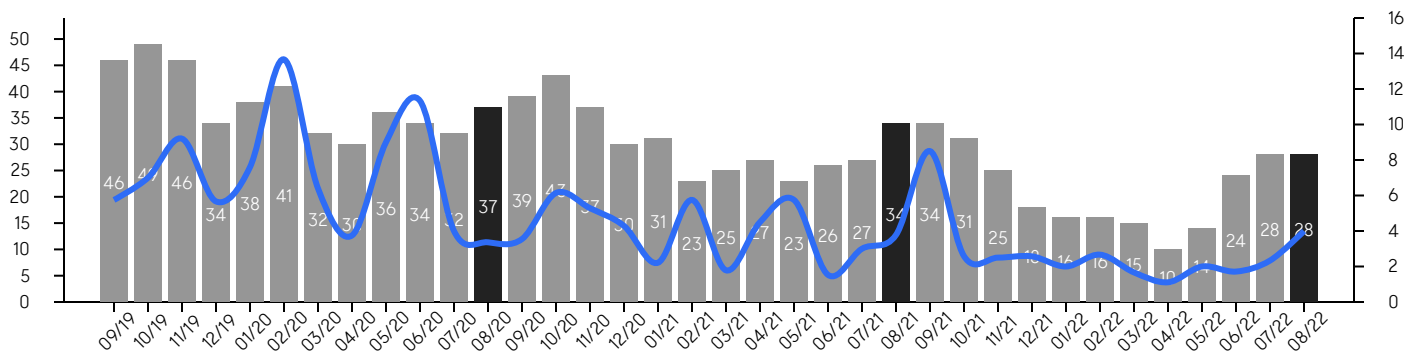
Watchung

AUGUST 2022

Inventory & MSI

The total inventory of properties available for sale as of August 2022 was 28, a difference of 0% from last month, and -18% from 34 in August 2021, and was at its lowest level compared to 2021 and 2020. The months of supply inventory (MSI) was at 4.0 months, a similar level compared to 2021 and 2020. A comparatively lower MSI benefits sellers, while a higher MSI benefits buyers.

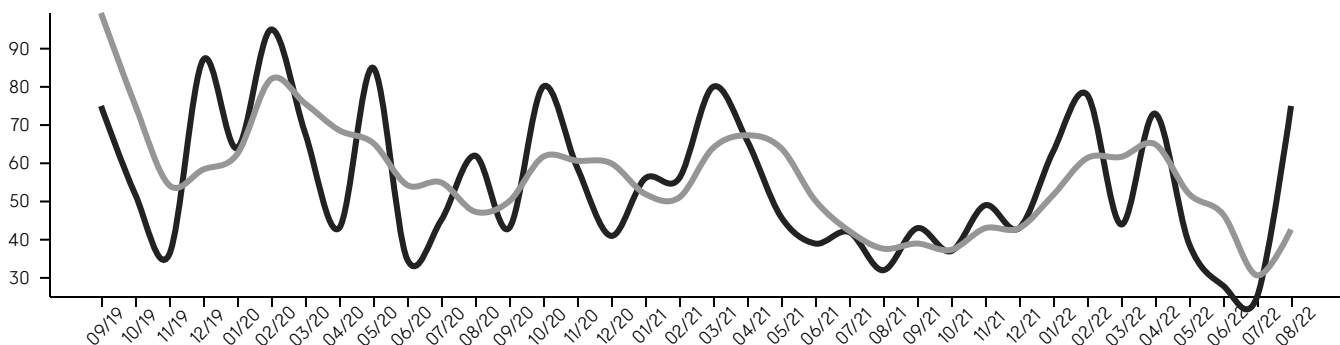
■ MSI



Market Time

The average days on market (DOM) shows the number of days the average property is on the market before selling. An upward trend tends to indicate a move towards a buyer's market, while a downward trend tends to indicate a move to a seller's market. The DOM for August 2022 was 75, a change of 200% from 25 days last month, and 134% from 32 days in August 2021, and was at its lowest level compared to 2021 and 2020.

■ Average ■ Average (3-Month)



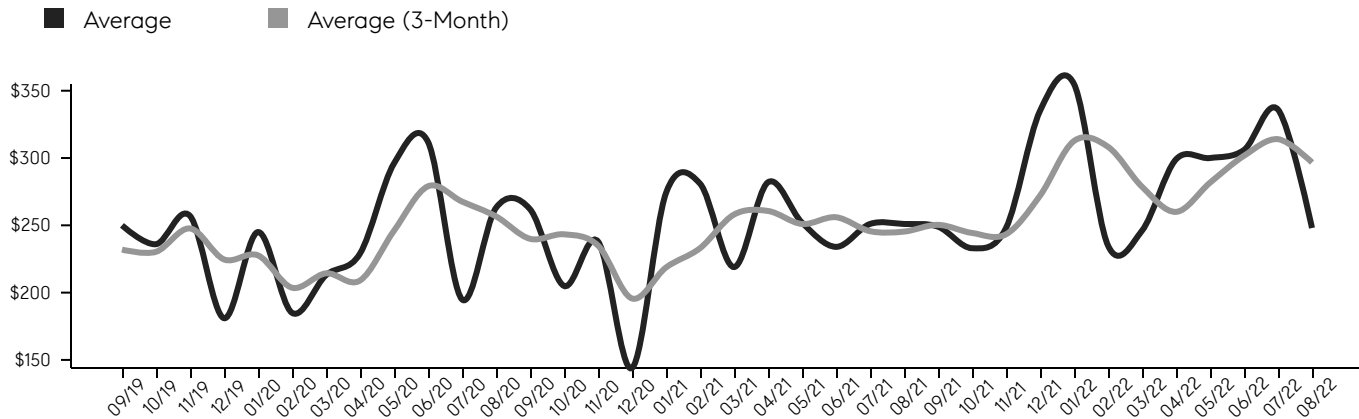
© 2022. Based on information from Garden State MLS, LLC for the period of January 2018 through August 2022. Due to MLS reporting methods and allowable reporting policy, this data is only informational and may not be completely accurate. Data maintained by the MLS may not reflect all real estate activity in the market.

Watchung

AUGUST 2022

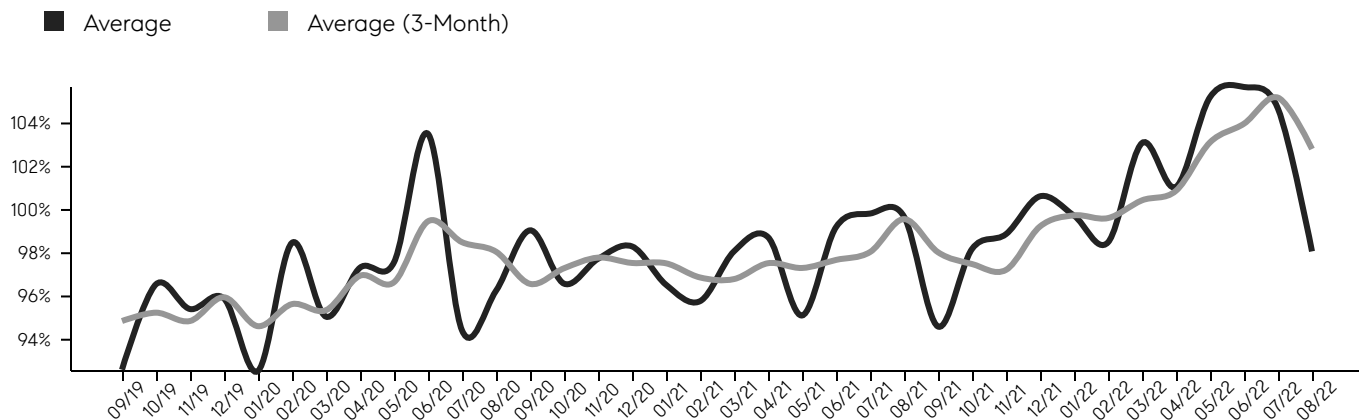
Selling Price Per Square Foot

The selling price per square foot (PPSF) is a great indicator for the direction of property values. Since median & average sales prices can be impacted by the "mix" of high or low end properties in the market, the selling price per square foot is a more normalized indicator on the direction of property values.



Selling Price vs. Listing Price

The selling price vs. listing price reveals the average amount that sellers are agreeing to come down from their list price. The lower the ratio is below 100%, the more of a buyer's market exists, while a ratio at or above 100% indicates more of a seller's market. The August 2022 selling price vs. listing price ratio was 98.1%, compared to 104.7% last month, and 99.7% in August 2021.



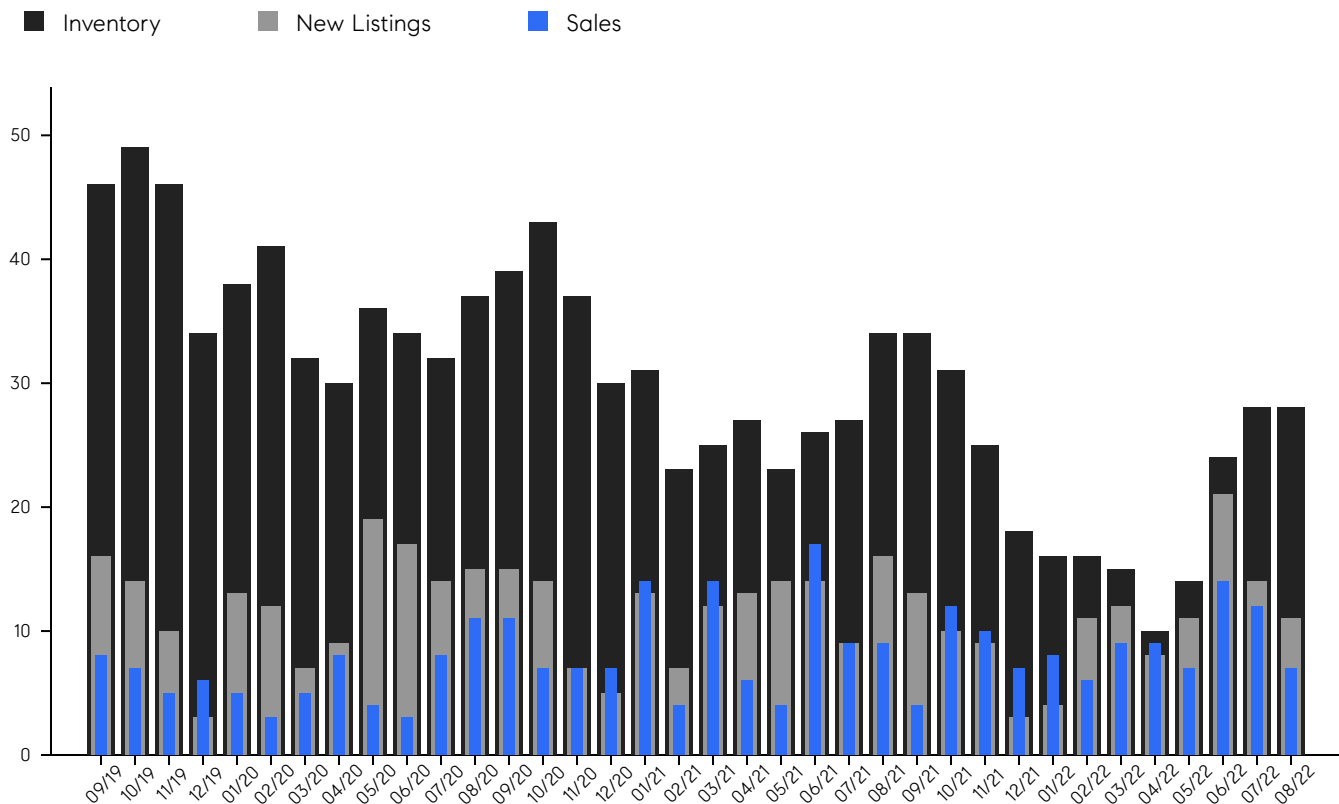
© 2022. Based on information from Garden State MLS, LLC for the period of January 2018 through August 2022. Due to MLS reporting methods and allowable reporting policy, this data is only informational and may not be completely accurate. Data maintained by the MLS may not reflect all real estate activity in the market.

Watchung

AUGUST 2022

Inventory, New Listings & Sales

This last view of the market combines monthly inventory of properties for sale along with new listings and sales. The graph shows the basic annual seasonality of the market, as well as the relationship between these items. The number of new listings in August 2022 was 11, a change of -21% from 14 last month and -31% from 16 in August 2021.



© 2022. Based on information from Garden State MLS, LLC for the period of January 2018 through August 2022. Due to MLS reporting methods and allowable reporting policy, this data is only informational and may not be completely accurate. Data maintained by the MLS may not reflect all real estate activity in the market.



MONTH	# OF SALES	3-MO AVG	MEDIAN SALE PRICE	3-MO AVG	AVERAGE SALE PRICE	3-MO AVG	DAYS ON MARKET	3-MO AVG	AVERAGE PPSF	3-MO AVG	SALE /LIST	3-MO AVG	INV	NEW LISTINGS	MSI
Aug '22	7	11	\$999K	\$960K	\$882K	\$956K	75	43	\$248	\$297	98.1%	102.8%	28	11	4.0
Jul '22	12	11	\$984K	\$882K	\$1.0M	\$996K	25	31	\$336	\$314	104.7%	105.2%	28	14	2.3
Jun '22	14	10	\$897K	\$884K	\$905K	\$962K	28	47	\$306	\$302	105.7%	104.0%	24	21	1.7
May '22	7	8	\$765K	\$885K	\$1.0M	\$995K	39	52	\$300	\$282	105.2%	103.1%	14	11	2.0
Apr '22	9	8	\$989K	\$843K	\$975K	\$974K	73	65	\$299	\$260	101.1%	100.9%	10	8	1.1
Mar '22	9	8	\$899K	\$769K	\$1.0M	\$919K	44	62	\$246	\$279	103.1%	100.4%	15	12	1.7
Feb '22	6	7	\$640K	\$717K	\$940K	\$888K	78	61	\$235	\$308	98.5%	99.6%	16	11	2.7
Jan '22	8	8	\$767K	\$766K	\$811K	\$838K	63	52	\$355	\$313	99.7%	99.8%	16	4	2.0
Dec '21	7	10	\$744K	\$768K	\$913K	\$875K	43	43	\$335	\$272	100.6%	99.2%	18	3	2.6
Nov '21	10	9	\$787K	\$922K	\$789K	\$963K	49	43	\$248	\$243	98.9%	97.2%	25	9	2.5
Oct '21	12	8	\$771K	\$929K	\$923K	\$968K	37	37	\$233	\$244	98.2%	97.5%	31	10	2.6
Sep '21	4	7	\$1.2M	\$952K	\$1.1M	\$993K	43	39	\$249	\$250	94.6%	98.0%	34	13	8.5
Aug '21	9	12	\$810K	\$858K	\$801K	\$916K	32	38	\$251	\$245	99.7%	99.6%	34	16	3.8
Jul '21	9	10	\$839K	\$956K	\$1.0M	\$1M	42	42	\$251	\$246	99.8%	98.1%	27	9	3.0
Jun '21	17	9	\$925K	\$935K	\$946K	\$920K	39	50	\$234	\$256	99.2%	97.7%	26	14	1.5
May '21	4	8	\$1.1M	\$865K	\$1.0M	\$872K	46	64	\$252	\$251	95.1%	97.3%	23	14	5.8
Apr '21	6	8	\$777K	\$649K	\$740K	\$714K	66	67	\$282	\$261	98.7%	97.5%	27	13	4.5
Mar '21	14	11	\$712K	\$627K	\$802K	\$753K	80	64	\$219	\$258	98.1%	96.8%	25	12	1.8
Feb '21	4	8	\$457K	\$591K	\$600K	\$712K	56	51	\$281	\$233	95.8%	96.9%	23	7	5.8
Jan '21	14	9	\$710K	\$664K	\$858K	\$753K	56	52	\$274	\$219	96.5%	97.5%	31	13	2.2
Dec '20	7	7	\$605K	\$670K	\$678K	\$724K	41	60	\$144	\$196	98.3%	97.5%	30	5	4.3
Nov '20	7	8	\$678K	\$685K	\$721K	\$806K	59	61	\$238	\$235	97.7%	97.8%	37	7	5.3
Oct '20	7	10	\$727K	\$690K	\$772K	\$913K	80	62	\$205	\$243	96.6%	97.3%	43	14	6.1
Sep '20	11	10	\$649K	\$656K	\$923K	\$882K	43	50	\$262	\$240	99.1%	96.6%	39	15	3.5
Aug '20	11	7	\$693K	\$583K	\$1.0M	\$728K	62	47	\$263	\$257	96.3%	98.1%	37	15	3.4
Jul '20	8	5	\$625K	\$559K	\$678K	\$593K	45	55	\$195	\$268	94.4%	98.5%	32	14	4.0
Jun '20	3	5	\$430K	\$530K	\$460K	\$553K	35	54	\$312	\$279	103.5%	99.5%	34	17	11.3
May '20	4	6	\$622K	\$659K	\$639K	\$676K	85	65	\$296	\$246	97.6%	96.7%	36	19	9.0
Apr '20	8	5	\$536K	\$703K	\$560K	\$705K	43	69	\$229	\$209	97.3%	97.0%	30	9	3.8
Mar '20	5	4	\$819K	\$708K	\$829K	\$726K	68	76	\$213	\$214	95.1%	95.4%	32	7	6.4
Feb '20	3	5	\$755K	\$613K	\$724K	\$727K	95	82	\$185	\$204	98.5%	95.6%	41	12	13.7
Jan '20	5	5	\$550K	\$548K	\$623K	\$705K	64	62	\$245	\$228	92.6%	94.6%	38	13	7.6
Dec '19	6	6	\$535K	\$548K	\$832K	\$702K	87	58	\$181	\$225	95.9%	96.0%	34	3	5.7
Nov '19	5	7	\$560K	\$551K	\$659K	\$606K	36	54	\$257	\$248	95.4%	94.9%	46	10	9.2
Oct '19	7	9	\$550K	\$638K	\$614K	\$681K	52	75	\$236	\$230	96.6%	95.3%	49	14	7.0
Sep '19	8	8	\$544K	\$710K	\$543K	\$734K	75	99	\$250	\$232	92.6%	94.9%	46	16	5.8

© 2022. Based on information from Garden State MLS, LLC for the period of January 2018 through August 2022. Due to MLS reporting methods and allowable reporting policy, this data is only informational and may not be completely accurate. Data maintained by the MLS may not reflect all real estate activity in the market.



CHERIE
BERGER
TEAM



Cherie Berger

cherie.berger@compass.com

M: 908.410.0931



Steven Berger

steven.berger@compass.com

M: 908.256.0307



Ashley Berger-Freitas

ashley.freitas@compass.com

M: 908.432.9818

Compass makes no representations or warranties, express or implied, with respect to future market conditions or prices of residential product at the time the subject property or any competitive property is complete and ready for occupancy or with respect to any report, study, finding, recommendation or other information provided by Compass herein. Moreover, no warranty, express or implied, is made or should be assumed regarding the accuracy, adequacy, completeness, legality, reliability, merchantability or fitness for a particular purpose of any information, in part or whole, contained herein. All material is presented with the understanding that Compass shall not be deemed to provide legal, accounting or other professional services. This is not intended to solicit the purchase or sale of any property. Any and all such warranties are hereby expressly disclaimed. Equal Housing Opportunity.

© Compass. All Rights Reserved. This information may not be copied, used or distributed without Compass' consent.